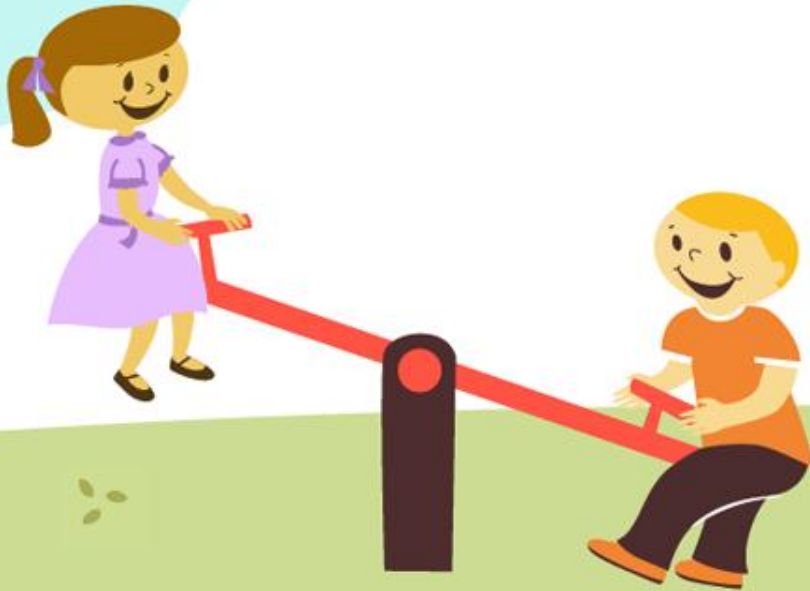


# Choice Open Enrollment 2013-2014



# Rowland Unified School District

Will be accepting applications for Choice Open Enrollment within the district including Telesis Academy for the 2013-14 school year from families that live within the Rowland Unified School District.



# CHOICE OPEN ENROLLMENT 2013-14

**November 1, 2012**  
Choice Open Enrollment Applications available at all school sites and Pupil Services Office

**January 18, 2013**  
Deadline for submitting the Choice Open Enrollment Application to Pupil Services Office by 4:00 p.m. Late applications will not be accepted.

**February 28, 2013**  
Parents will be notified by mail of the "Choice" results.

**March 29, 2013**  
Deadline for parents to register or contact the school of choice requested with acceptance letter. If parent fails to register or contact the school of Choice the application will be forfeited.

If you have any questions regarding the Choice Open Enrollment Program please call Pupil Services Office at: (626) 935-8204

Director of Pupil Service,  
Dr. Melissa A. Neal



**Only** if you wish for your child to attend another school within the Rowland District must you complete and submit the required Choice Open Enrollment Application form. The application will be available for pick up at any school site in the district or Pupil Services Office at:

1928 S. Nogales Street, Rowland Heights, CA 91748.

One application per child must be submitted.

**DO NOT** fill out a Choice Open Enrollment application if your child will continue to attend his/her school of residence in the 2013-2014 school year.

Sibling(s) of a child attending a School of Choice **must** submit a Choice Open Enrollment application and make sure to write the name of the child already attending the school of choice thru the Choice Open Enrollment program. Placement of sibling(s) is pending space availability.

Transportation: Transportation to a school of choice is the responsibility of the parent.



# Reminder:

**The deadline for all applications is, Friday, January 18, 2013, by 4:00 p.m. in Pupil Services Office.**

Late hand carried applications or mailed applications received after the due date or time will not be accepted.

If you have any questions regarding Choice Open Enrollment program, please call Pupil Services Office at: (626) 935-8204.





# District Map

## Elementary Schools (626) Area Code

2 Blandford	2601 Blandford Dr., Rowland Hts. 91748	965-3410
3 *Farjardo	18550 Farjardo, Rowland Hts. 91748	
5 Hollingworth	3003 E. Hollingworth, W. Covina 91792 (909) 598-3661	
6 Hurley	535 S. Dora Guzman, La Puente 91744	965-2429
7 Jellick	1400 S. Jellick Ave., Rowland Hts. 91748	964-1275
8 Killian	19100 E. Killian St., Rowland Hts. 91748	964-6409
9 *La Seda	341 S. La Seda Rd., La Puente 91744	
11 Northam	17800 E. Renault St., La Puente 91744	965-2404
14 Rorimer	18750 E. Rorimer St., La Puente 91744	965-3333
15 Rowland	2036 S. Fullerton Rd., Rowland Hts. 91748	964-3441
18 Shelyn	19500 E. Nacora St., Rowland Hts. 91748 (909) 444-0584	
19 Villacorta	17840 E. Villacorta, La Puente 91744	964-2385
21 Yorbita	520 S. Vidalla, La Puente 91744	964-3486

## K-8 Schools

12 Stanley G. Oswalt Academy	19501 Shadow Oak Dr., Walnut 91789	810-4109
13 Telesis Academy of Science & Math	2800 E. Hollingworth, W. Covina 91792	965-1696
20 Ybarra Academy of Arts & Technology	1300 Brea Canyon Cut-off, Walnut 91789 (909) 598-3744	

## Intermediate Schools

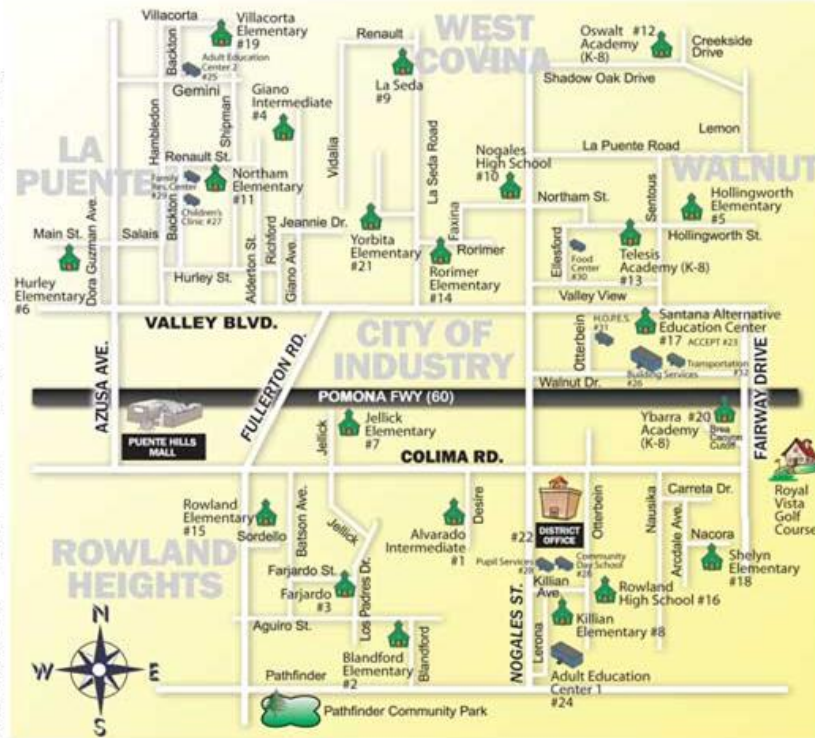
1 Alvarado	1901 S. Desire Ave., Rowland Hts. 91748	964-2358
4 Giano	3223 S. Giano St., W. Covina 91792	965-2461

## High Schools

10 Nogales	401 S. Nogales St., La Puente 91744	965-3437
16 Rowland	2000 S. Otterbein Ave., Rowland Hts. 91748	965-3448
17 Santana	1006 Otterbein Ave., Rowland Hts. 91748	965-5971

## Other Sites

iQ Academy Charter	1830 S. Nogales St., Rowland Hts. 91748 (888) 997-4722	
22 District Office	1830 S. Nogales St., Rowland Hts. 91748	965-2541
23 ACCEPT	1006 Otterbein Ave., Rowland Hts. 91748	913-0376
24 Adult Education Ctr 1	2100 S. Lerona, Rowland Hts 91748	965-5975
25 Adult Education Ctr 2	Corner of Backton & Gemini, La Puente 91744	965-5975
26 Building Services	1018 Otterbein Ave., Rowland Hts. 91748	912-0665
27 Children's Clinic	17800 E. Renault St., La Puente 91744	964-4798
28 Pupil Services	1928 S. Nogales St., Rowland Hts. 91748	935-8203
28 Comm. Day School	1928 S. Nogales St., Rowland Hts. 91748	935-8210
29 Family Res. Center	17800 E. Renault St., La Puente 91744	854-2228
30 Food Center	4032 Ellesford, W. Covina 91792	965-2566
31 H.O.P.E.S.	1006 Otterbein Ave., Rowland Hts. 91748	912-3066
32 Transportation	1010 Otterbein Ave., Rowland Hts. 91748	965-5719



This map is for site locations only and does not reflect the actual physical boundaries of Rowland Unified.

[www.RowlandSchools.org](http://www.RowlandSchools.org)

